

# PUT YOUR MONEY WHERE THE MIRACLES ARE

...and make a difference in a child's life



## Miracle System: How to Access Your Account Through MAX/Center

All you need to log in is your remax.net username and password.

### There are two ways to log in to the Miracle System via MAX/Center:

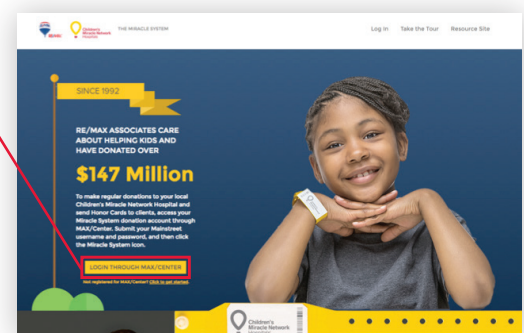
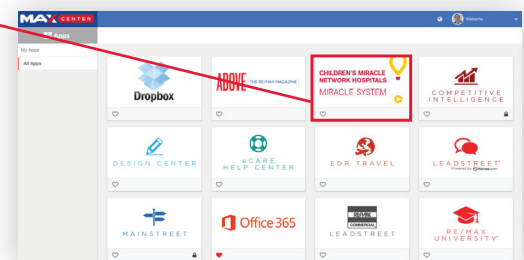
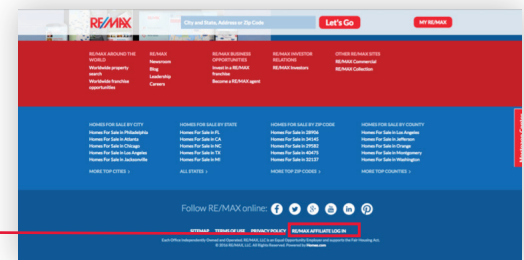
- Go to [remax.com](http://remax.com) and click the "RE/MAX Affiliate Log In" link in the footer. Enter your remax.net username and password and click "Log In." Then click the Miracle System icon on your MAX/Center dashboard.

– OR –

- Go to [miraclehomeprogram.org](http://miraclehomeprogram.org) and click "Log In Through MAX/Center." When you enter your remax.net username and password, you'll be directed right to your Miracle System dashboard.

### If you can't remember your remax.net username and password to access MAX/Center – or if you don't have a remax.net account:

- Go to [www.remax.net](http://www.remax.net) and click "Forgot Login"
- Reset your password (enter your remax.net username)
  - OR –
  - Request a username (enter your name and the email address you provided for your RE/MAX membership profile)
- Click "Submit"
- Check your email and follow the instructions in the message



For support accessing your Miracle System account, contact eCare through the Help Center portal on [MAX/Center](http://MAX/Center) or email [eCare@remax.net](mailto:eCare@remax.net).